

**NEWSLETTER June 2<sup>nd</sup> 2022 Volume 1 Issue 16**

**ACKNOWLEDGEMENT OF COUNTRY**

*"I'd like to acknowledge the traditional owners of the land upon which we meet today, the Gunai Kurnai land and pay my respects to elders past, present and emerging as well as any Aboriginal people here with us today"*

Dates to remember 2 May – 10 June				
Mon	Tue	Wed	Thu	Fri
30 Preps 2023 Parent information night 6.00- 7.00pm  3/4 JK Swimming	31  3/4 JK Swimming	1 June  3/4 JK Swimming	2  3/4 JK Swimming	3  3/4 JK Swimming
6 3/4JK Swimming Last day for Pie Orders. Last day to order Pasta Day	7  3/4 JK Swimming	8  3/4 JK Swimming	9  3/4 JK Swimming	10  Pupil Free Day
13  Queens Birthday	14	15	16 Pasta Day.  Pie drive delivery pick up 3.15pm	17
20	21	22	23	24 End Term 2 1.15pm Finish

Cook 5/6 EG) who are running a 10c milk bottle challenge from p-6 until the end of the term. The object with this challenge is for students in each grade to bring in 10c coins to fill the 2 litre plastic milk bottle that is in their classroom. The class that raises the most money will win a whole class prize at the end of the term. ALL money raised will go directly towards school garden and sports equipment. **The photo below is of two of the team Brodie and Maddy.**



Another way that student leadership is promoted is via our **Junior School Council (JSC)**. Mrs Fiona Dunne supports these students, who are currently running a "Guess how many Easter eggs in the jar competition". This competition is 50cents per guess. **The photo below is of two of the JSC members Billy Schessl and Harvey Burnett.**



At NEPS we are extremely fortunate to have wide open spaces and attractive garden areas. Many of our students help to support our grounds and maintenance staff with their upkeep.

**SCHOOL PHOTO DAY IS COMING:**

Term 3 Monday 25<sup>th</sup> July, mark this date on your calander.

**A word from Mrs Skee...**

At Newborough East Primary School we take great pride in promoting student voice and agency. Leadership can take the form of formal positions as well as be demonstrated by student led initiatives. Currently we have a group of senior students (Brodie Bartley 5/6 EG, Maddy Valasek 5/6 EJ, Indie Reid 5/6 EG and Olivia

The photo below shows some of our students working on our Inclusive playground area.



### Prep 2023 information night

On Monday the 30<sup>th</sup> of May we ran our Prep 2023 information night. This was extremely well attended. Thankyou to all staff and families who came along on the night. As enrolments are filling up fast, I strongly encourage those who have a prep in 2023 to contact the office re enrolment if they haven't already done so in order to secure your place.



### Student Free Professional practice day:

Please be advised that the members of the school council have approved a "STUDENT FREE" professional practice day for ALL NEPS staff **on Friday June the 10<sup>th</sup>**. This is then followed by the Queen's birthday on **Monday the 13<sup>th</sup> of June**, which is a public holiday. There will be **NO SCHOOL** on either of these days and the administration office will also be closed.

### Pie Drive

Just a reminder Pie Drive orders are due in on Monday the 6<sup>th</sup> of June. All orders and money need to be placed in the Office Drop Box. Eftpos payments can be made at the office. Sorry but we can't accept late orders. Spare Pie Drive order forms are available from the office. Pies will be supplied by Out of Dough in Morwell. Pie orders will be available for collection on Thursday 16<sup>th</sup> June at 3.15pm from the gym.

### Move-a-thon

Thank you to all the students who were involved in fundraising for our school Move-a-thon. Move-a-thon Prizes were sent home with students on Tuesday.

## MATHS JOKE OF THE WEEK

Q: What did the baby acorn say when it grew up?

A: Geometry (Gee, I'm a tree!)

## Swimming & Water Safety



**3/4 JK Room 1 will commence swimming on Monday 30<sup>th</sup> May for 8 sessions.** There is **NO CHARGE** for this program.

1.	Monday 30 <sup>th</sup>	May	2.00pm – 2.45pm
2.	Tuesday 31 <sup>st</sup>	May	2.00pm – 2.45pm
3.	Thursday 2 <sup>nd</sup>	June	2.00pm – 2.45pm
4.	Friday 3 <sup>rd</sup>	June	2.00pm – 2.45pm
5.	Monday 6 <sup>th</sup>	June	2.00pm – 2.45pm
6.	Tuesday 7 <sup>th</sup>	June	2.00pm – 2.45pm
7.	Wednesday 8 <sup>th</sup>	June	2.00pm – 2.45pm
8.	Thursday 9 <sup>th</sup>	June	2.00pm – 2.45pm

## PIE DRIVE

Our delicious pies are from Out of Dough in Morwell. Order forms and money need to be returned to NEPS by **Monday the 6<sup>th</sup> of June**. Pie orders will be available for collection on **Thursday 16<sup>th</sup> June at 3.15pm from the gym.**



## Canteen Special Lunch Day



### PASTA DAY **Thursday 16<sup>th</sup> June**

On Thursday 16<sup>th</sup> June the canteen is having a Pasta day. **ALL ORDERS** will need to be returned to the office via the drop box no later than **Monday 6<sup>th</sup> JUNE** because we need to order the pasta in. There can be **NO LATE ORDERS** taken after this date. There are spare copies available at the office.



**BLUE HOUSE Wins !!**

by blowing a whistle) before stepping onto the crossing.

- **WALKING** scooters or bikes across the crossing
- Make eye contact with the nearest drivers
- Once traffic has stopped (and the crossing supervisor has waved you onto the road), **WALK** across between the marked lines
- Keep **LOOKING**, **LISTENING** and **THINKING** as you walk straight across to the other side.

**AWARD WINNERS**



**Three great ways to be a pedestrian role model**

1. Always Stop, Look, Listen and Think at roads, driveways and in car parks.
2. Always cross at a crossing.



3. Children up to the age of 10 or 11 should walk with an adult. Younger children should always hold hands with an adult when crossing the road.



**Breakfast Club**

**Donations Needed**

NEPS Breakfast club would love donations of the following items:

Milo, Jam, Margarine and Juice.

Breakfast club is a place where everyone is welcome to come warm up, while enjoying some breakfast or socializing with peers.

**CROSSING UPDATE:**

Dear Parents and families, we have had a number of concerning phone calls regarding close calls and risky behaviour around some of our students around the school of late. Please ensure that you re-enforce the correct way to cross the crossing by:

**Children's crossing procedure:**

- **STOP** and wait a step back from the kerb
- **LOOK** in all directions
- **LISTEN** for traffic sounds
- **WAIT** for traffic to stop (and for the crossing supervisor indicate it is safe,

**Staying Safe while in the car**

1. Make it a rule for everyone to always put on their seatbelts before driving off.
2. Have children use the 'safety' or kerb side door when getting in and out of the car.



3. It's safest for children to continue using their booster seat and sit in the back seat until they achieve a good seatbelt fit which is around 145cm tall.



## Our Litter collectors on the job



## CLAIMING CSEF

Parents if you have a valid Healthcare card from January 31<sup>st</sup> 2022 with your children listed on the card you may be eligible to claim the CSEF (Camps sports & Excursion fund)

Applications close on June 24<sup>th</sup> for the first round of funding.

If you claimed the funding last year you need not apply as application have rolled over from last year.

If you are unsure, please contact Denise Siinmaa in the office to confirm if you have received the funding for this year.

Application forms are available from the school office.

You will need to provide a copy of your current healthcare card..

## Building Community

This year at NEPS we have continued to connect and build stronger relationships with our local businesses; To help provide connections where we as a school can help support and promote so many beneficial services and goods in our local community and be in a position to gratefully receive so many generous donations. This week we have received multiple donations (Freshly baked scones, grazing platters, food vouchers and more!) towards our staff wellbeing afternoon from The Newborough Pub. We are very appreciative of their support and in turn would love to return our support as a school community. We strongly encourage and recommend anyone to have a night out, whether with friends or family, at the



Newborough Pub. They have just reopened their newly refurbished bistro and it looks fantastic! Check them out on Facebook or call them on [5126 2117](tel:51262117) to make a booking.

<i>Entree</i>	
CHEESY GARLIC BREAD #10	PUMPKIN CHICKPEA CURRY #24 with steamed rice, puppadums and mango chutney (vegan)
SOUTHERN STYLE CRUMBED MUSHROOMS #12 served with ranch sauce	NEWB BURGER #25 180gm house made patty, lettuce, cheese, pickles, red onion and burger sauce on a brioche bun served with chips
HOUSEMADE VEGGIE SPRING ROLLS #15 with asian dipping sauce	250GM PORTERHOUSE STEAK #29 with your choice of sides and sauce
BUFFALO WINGS #16 with ranch dipping sauce	FISH AND CHIPS #22 with your choice of sides, tartare and lemon
PRAWN TWISTERS #16 with lemon dill aioli	CHICKEN SCALLOPINE #26 grilled chicken, mushroom, bacon and semi dried tomatoes in a creamy white wine sauce with your choice of sides
	FETTUCCHINE CARBONARA #22

# Michael Salmon

## Tuesday 7<sup>th</sup> June Michael Salomon grade 3-6

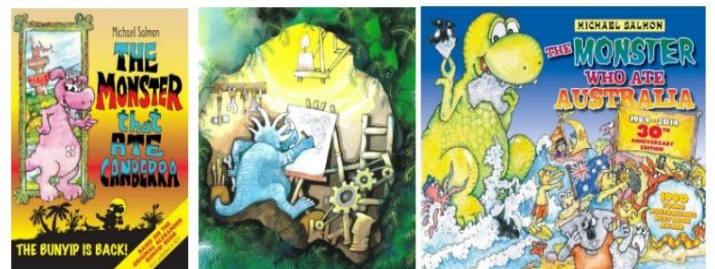
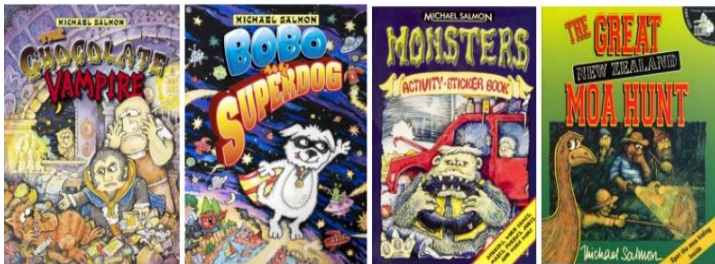
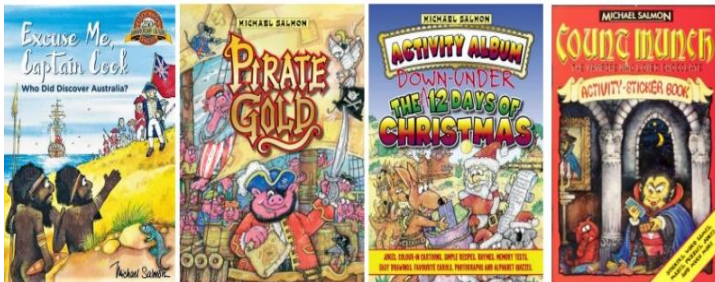
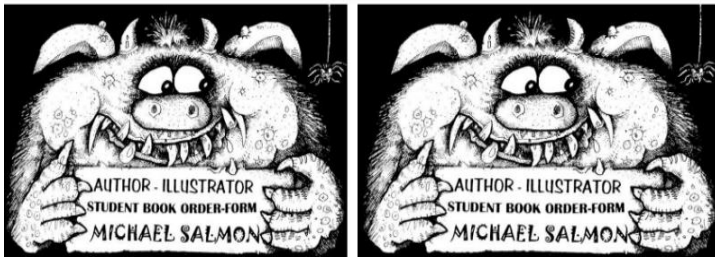
In September 2020, Michael adapted his live visit format into that of an online-virtual show, still an hour in length, suitable for all age groups, speaking and cartooning to Students in libraries, classrooms, and to those home-schooling. Presented from his Kooyong, Melbourne Studio, these secure new style sessions (which now include drawing cartoons with the Students) have enabled a lot closer screen contact with his audience and have taken the presentation into another dimension. Staff and Student feedback has been enthusiastic!

Students in grades 3-6 will be viewing a Webex next Tuesday 7<sup>th</sup> with Michael Salmon, this is paid for by NEPS and students will have to opportunity to see Michael in action and also be able to purchase books if you would like (See order form) all orders can be made on line.

### STUDENT BOOK-ORDER FORM 12/03/21

**Michael Salmon: Children's Author/Illustrator**

Date:	Class:
Student name:	
School:	
*Please email a copy of this form with selected books to: <a href="mailto:michael@michaelsalmon.com.au">michael@michaelsalmon.com.au</a>	
1. TO PAY VIA EFT, PLEASE REQUEST ANZ DIRECT DEPOSIT DETAILS.	
2. OR TO PAY VIA CREDIT CARD, PLEASE FILL IN DETAILS BELOW.	
3. BASIC AUSTRALIA POST POSTAGE + PADDED POST-PACK COST (IF NEEDED) WILL BE ADDED.	
4. BOOKS PURCHASED WILL BE SENT DIRECTLY TO PARENTS. <span style="float: right;">THANK YOU.</span>	
CREDIT CARD PAYMENT:	
Name on card:	
Credit card number:	
Expiry Date:	Security number on back:
Book amount: \$	
Address for Books:	
Postcode:	
+ BASIC POSTAGE COST + PADDED POST-PACK (IF NEEDED) TO BE CALCULATED/ADDED	



1	NEW: 'Excuse me, Captain Cook' (2020 Edition-Soft cover)	\$12	
2	'Bobo my Superdog' (Soft cover)	\$12	
3	'The Monster who ate Australia' (30 <sup>th</sup> yr edition, Award Winner, Soft cover)	\$12	
4	'The Chocolate Vampire' (Soft cover)	\$12	
5	'The Chocolate Vampire' (Hard cover)	\$18	
6	'Count Munch, the Vampire who loved chocolate' (Activity - sticker book)	\$5	
7	'The Great New Zealand Moa hunt' (Soft cover)	\$12	
8	'The Down-Under 12 Days of Christmas' (Activity Album)	\$10	
9	'The Monster that ate Canberra' (Soft cover)	\$12	
10	'Pirate Gold' (Hard cover)	\$18	
11	'Monsters and other creepy things' (Activity - sticker book)	\$5	
Download 90+ Early Australian Colonial History colouring panels on website: <a href="http://www.michaelsalmon.com.au">www.michaelsalmon.com.au</a> *Author will sign each book + enclose a bookmark.			Books Total: