



**NEWSLETTER 28 June 2024 Issue 18**

**ACKNOWLEDGEMENT OF COUNTRY**

*"I'd like to acknowledge the traditional owners of the land upon which we meet today, the Gunai Kurnai land and pay my respects to elders past, present and emerging as well as any Aboriginal people here with us today"*

<b>Dates to Remember Term 2 2024</b>				
24 June	25 June	26 June	27 June	28 June
				Canteen open for business as usual  <b>2.30 Dismissal End Term 2</b>  No Buses on this day
<b>School Holidays 28 June to 14 July</b>				
<b>Term 3 15 July</b>	16 July	17 July	18 July	<b>19 July NAIDOC event Grade 6</b>
<b>22 July Dental Forms due back</b>	23 July	24 July	25 July	26 July  NAIDOC celebrations
<b>29 July Professional Development Day Students not required  School Council 5.00pm</b>	<b>30 July Parent Teacher Student Conversations No classes BUT Students required at interviews</b>	31 July	August 1	<b>2 August</b>
5 August	6 August	7 August	8 August	9 August

**A word from Mrs Skee**

I would like to take this opportunity to wish ALL of our students, staff and families and very safe and relaxing term 2 holiday break. Thank you all for your ongoing work and support of NEPS and we look forward to seeing you all back at school on **Monday the 15<sup>th</sup> of July**. Please continue to monitor our school communication portals for any new information.

## A word from Mrs Skee continued

### **Staffing :**

Good luck to Mrs Jo Harding who will be leaving NEPS to take up a 6 position teaching position at Traralgon South Primary School. We will miss you but look forward to seeing you again for the Student/Teacher/Parent conversations scheduled for Tuesday the **30<sup>th</sup> of July**. Ms Sonia Mancarella will be starting at NEPS on the first day back of term 3, and will be in 3/4 HV each Monday, Tuesday and Wednesday. Ms Thompson will be in the grade each Thursday and Friday.

We would like to congratulate Ms Katie Blackshaw who is our provisional appointment for the 0.2 teaching position for 3/4 DR. Katie will be working alongside Ms Debbie Richardson and will be in the grade each Thursday. Katie is well known to NEPS and was previously working in an Education Support role whilst she has been completing her studies.

A reminder that Ms Kalinda Smith will be reducing her time fraction to 0.8 in term 3. Ms Laura Thompson will be working alongside Ms Smith in prep KS and will teaching the grade each Wednesday.

### Library Books

Some of your children will have come home this afternoon with a slip off paper that has the name of a library book and a due date on it. If you could please have a look around your house/car/etc and return these books as soon as possible, that would be great. There are a few library bags here in the classroom, so keep that in mind when having a look for the overdue books.

## STUDENT OF THE WEEK AWARD WINNERS

### STUDENT AWARDS



**Red House wins !!!!**

**Great behavior at assembly**

**Mr Grays Garden raffle  
Aaliyah Prep**



**Winners of the raffle for simultaneous  
Storytime book**

**Green team awards for yard duty cleanup**





**Students rewarded for the highest nights of home reading**

**Beleza**

SCHOOL  
UNIFORMS

## TEMPORARY CHANGES TO TRADING HOURS FOR SCHOOL HOLIDAYS

Your local Beleza store will be closed during the first week of holidays

Please note that all stores will close at 2 pm on Friday 28th of June and be closed until Monday 8th of July.

We'll return to our usual trading days and hours across all stores from Monday 8th of July, however as our trading days differ from store to store, please check your local store's trading hours.

We'd like to apologise for any inconvenience that these changes may cause, and thank you for your understanding. We hope you all have a safe and enjoyable holiday break!

**FREE Entry for adults and children**

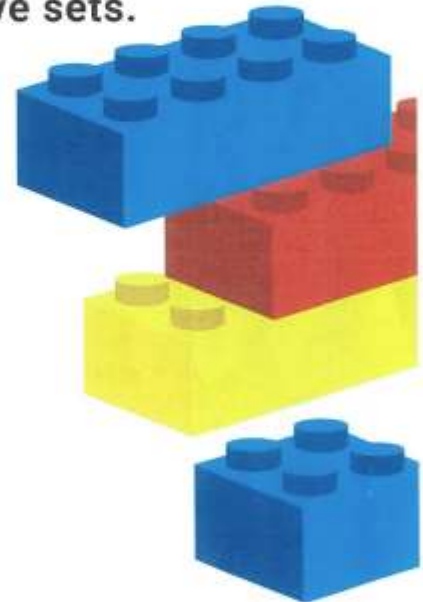
# LEGO MARVELS

**JULY  
SCHOOL  
HOLIDAYS**

**Huge Lego architecture display at Moe Library!**

**Explore architectural marvels from around the globe, recreated by The Briqueorium using Lego's largest and most impressive sets.**

- Eiffel Tower
- Tower Bridge
- Taj Mahal
- Sydney Opera House
- Great Pyramid of Giza
- Statue of Liberty
- Himeji Castle



**Moe Library**

**13 July to 13 July during Library opening hours**

*FREE ENTRY*

**Stay  
local**



**SCAN THE QR  
CODE FOR STAY  
LOCAL EVENTS.**

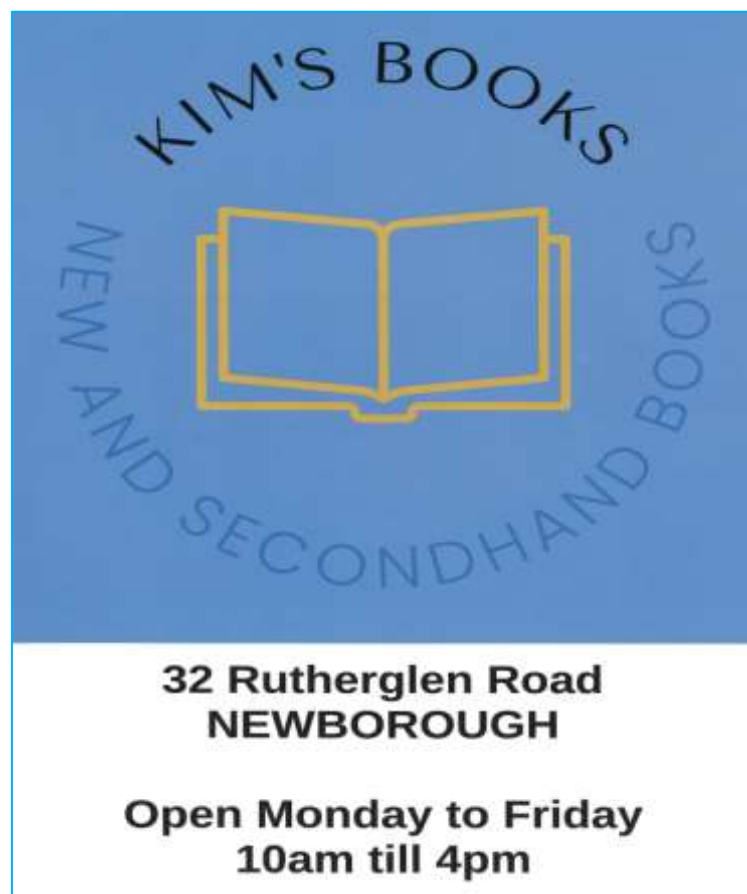
Book online or at your  
local library

**LatrobeCity**  
a new energy

### Support Local

This holidays please support locals whom support us. Monash Road Pizza not only has very yummy pizzas but also supports us with vouchers for prizes for which we are very grateful.

Kims books another small local business and is a supporter of NEPS Please support local to keep these owner operator businesses going. Thanks NEPS Team







It's not too late to order!

**Now is your Second Chance!**

### Don't lose your precious memories!

Second Chance is the unique post delivery process for parents who missed the first chance to order school photos. With new packages options and reduced prices, our photos are **more affordable than ever before.**

### Second Chance ordering is easy:

- Your child receives a bookmark with photo sample and a unique access key
- Visit our website and click 'Order School Photos'
- Enter your unique access key
- Select from our huge range of standard and customisable packages
- Finalise your order with one of our payment options
- Your school photos will be posted directly to your home!



1800 750 586 | [leadingimage.com.au](http://leadingimage.com.au) |

**Winter 2024 PROGRAM**

**CREATIVE HIGHLIGHTS**

**GIPPSLAND PERFORMING ARTS**

Thu 4 July

**Sparrow Eats A Dinosaur! Shadow-play and Drama Workshop**

10am to 12noon  
Town Hall Theatre  
Ages 5-8. Bookings required.

Fri 5 July

**Mouse Swallows Elephant!**

10am to 12noon  
Town Hall Theatre  
Ages 9-12. Bookings required.

**Butterfly Dreaming Theatre-making Workshop**

1pm to 3.30pm  
Town Hall Theatre  
Ages 13-18. Bookings required.

Wed 10 July

**Musical Theatre Masterclass**

11am to 4pm  
Town Hall Theatre  
Ages 15-22. Bookings required.

**LATROBE CITY LIBRARIES**

**Gruffalo Day**

Come celebrate all things Gruffalo with crafts and stories!  
Moe Library - Mon 1 July, 10am  
Morwell Library - Mon 1 July, 2pm  
Traralgon Library - Mon 1 July, 10am  
Churchill Library - Mon 1 July, 2pm

**Manga and Drawing Workshops**

Manga (ages 12-17)  
1.30pm to 2.30pm  
Drawing (ages 7-12)  
10.30 am to 11.30am  
Bookings required.  
Morwell Library - Tue 2 July  
Churchill Library - Wed 3 July  
Moe Library - Mon 8 July  
Traralgon Library - Tue 9 July

**Storytime Stomp**

Preschoolers and parent/carer. Bookings preferred.  
Moe Library - Thu 4 July, 10am  
Traralgon Library - Thu 4 July, 1.30pm  
Morwell Library - Thu 11 July, 10am  
Churchill Library - Thu 11 July, 1.30pm

**LATROBE LEISURE**

**LATROBE LEISURE MOE/NEWBOROUGH**

Mon 1 July  
**Teen Zumba Dance Party**  
12.15pm  
Ages 12+. Bookings required.

**LATROBE LEISURE CHURCHILL**

Thu 4 July  
**\$2 Stadium Fun Day for the kids**  
10am to 12pm  
Come and try Disc Golf, Pickleball and other stadium games.  
No bookings required.

**LATROBE LEISURE MORWELL**

Fri 5 July  
**Pool Dance Party**  
12noon to 3pm  
Kids Aqua 12.30-1pm + Otto 1-3pm including music on pool deck and pool entry all day. Standard child entry fee (LTS students FREE entry) - No bookings required.

**ALL LEISURE CENTRES**

**\$2 Basketball Shots**  
Not including scheduled training.



**AND LOOK OUT FOR THESE OTHER EVENTS!**

**Heaps of FREE fun for everyone at Latrobe City Libraries!**

Bingo, Lego, Podcast Workshop and GameFest.

School holiday swim program at Latrobe Leisure centres in Churchill, Morwell and Moe/Newborough.

Visit Latrobe Regional Gallery for art and inspiration.

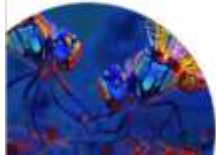
**BOOKINGS & FULL PROGRAM**

**Library**  
Visit your local branch or go to: [latrobe.vic.gov.au/library](http://latrobe.vic.gov.au/library)  
**Gippsland Performing Arts Centre**  
Visit the box office or go to: [www.gippslandpac.com.au](http://www.gippslandpac.com.au)  
**Latrobe Leisure**  
Visit your local centre or go to: [latrobe.vic.gov.au/leisure](http://latrobe.vic.gov.au/leisure)  
**Latrobe Regional Gallery**  
Visit the gallery or go to: [latroberegionalgallery.com](http://latroberegionalgallery.com)

For the full Stay Local Program visit: [latrobe.vic.gov.au/staylocal](http://latrobe.vic.gov.au/staylocal)



Scan the QR code for more information.



**Latrobe Leisure**

**Latrobe Leisure Churchill**  
Cry Northways Road and McDonald Way  
☎ 5120 3888

**Latrobe Leisure Morwell**  
McDonald Street  
☎ 5128 6144

**Latrobe Leisure Moe Newborough**  
Cry Old Sale Road and Southwell Avenue  
☎ 5135 8580

**Gippsland Regional Indoor Sports Stadium, Traralgon**  
Catterick Crescent  
☎ 5176 3000  
[www.latrobe.vic.gov.au/leisure](http://www.latrobe.vic.gov.au/leisure)

**Latrobe Regional Gallery**

138 Commercial Road Morwell  
☎ 5128 5700  
[www.latroberegionalgallery.com](http://www.latroberegionalgallery.com)

**Latrobe City Libraries**

**Churchill Library**  
9-11 Philip Parade Churchill  
**Morwell Library**  
63- 65 Elgin Street  
**Moe Library**  
1-29 George Street  
**Traralgon Library**  
34-38 Kay Street  
☎ 1300 367 700  
[www.latrobe.vic.gov.au/library](http://www.latrobe.vic.gov.au/library)

**Gippsland Performing Arts Centre**

32 Kay Street, Traralgon  
☎ 5176 3333  
[www.gippslandpac.com.au](http://www.gippslandpac.com.au)

**Stay Local**  
but let your imagination wander...

Hang out these holidays with our low-cost/no-cost activities for all the family.  
With arts and crafts, movies and movement, you don't have to travel far to enjoy all the fun!

Winter 2024 PROGRAM

To obtain this information in languages other than English, or in other formats, please contact Latrobe City Council on 1300 367 700.  
Date of publication: June 2024.

